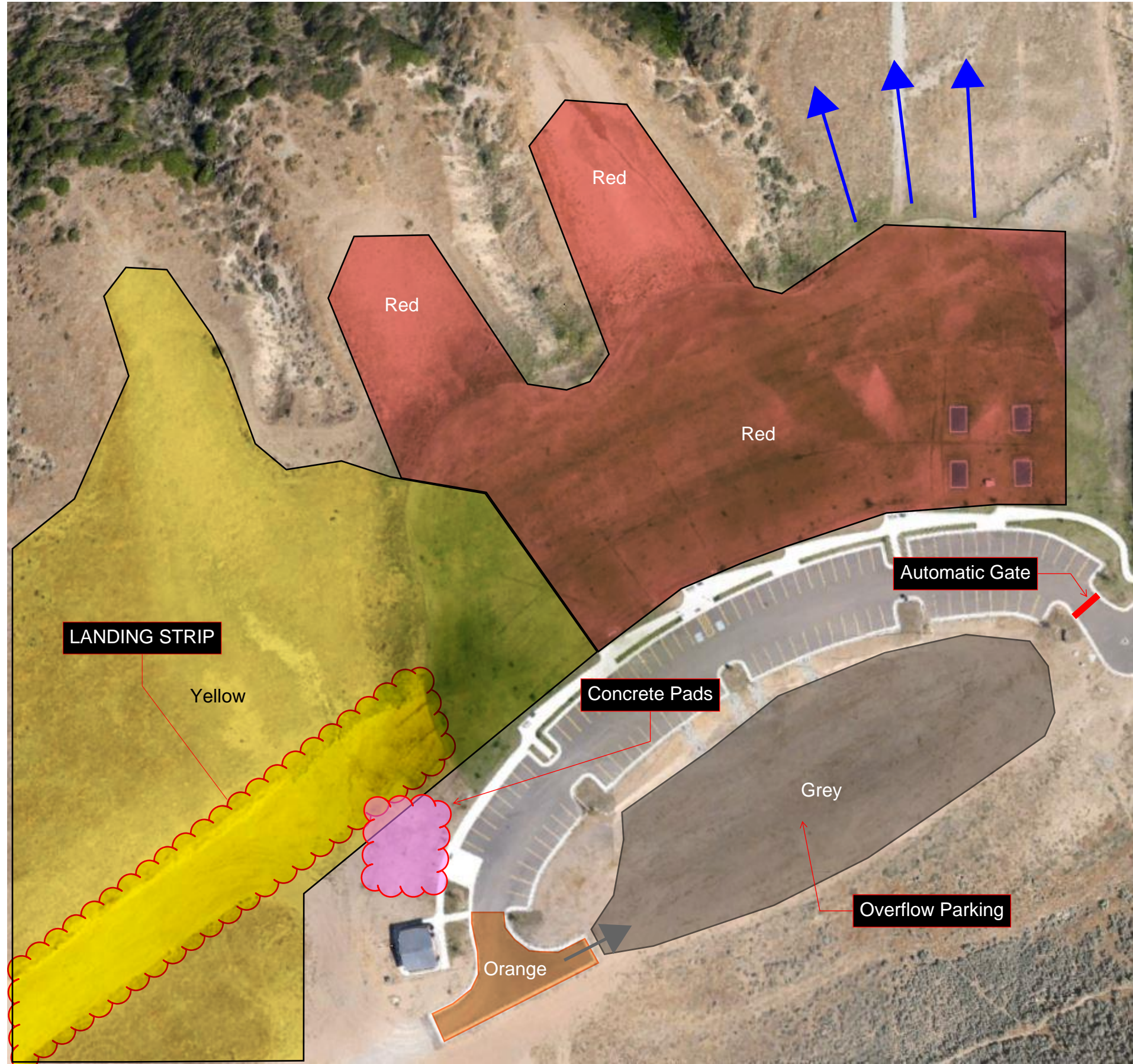


Point of the Mountain Flight Park - North Side - Zone Map



KEY

FEDERAL AVIATION REGULATION (FAR) 103

ALL PARTS OF FAR 103 APPLY AT THIS FLYING SITE. REMEMBER - PER FAR 103.11 NO PERSON MAY OPERATE AN ULTRALIGHT VEHICLE BETWEEN THE HOURS OF SUNSET AND SUNRISE. MAY OPERATE 30 MINUTES OUTSIDE OF SUNSET/SUNRISE IF EQUIPPED WITH AN OPERATING ANTICOLLISION LIGHT VISIBLE FOR AT LEAST 3 STATUTE MILES, AND OPERATIONS ARE CONDUCTED IN UNCONTROLLED AIRSPACE.



Active kiting and launching. Kiting pilots must yield right-of-way to launching pilots. No Landing Zone



Hang Glider Launching area



All Pilots Landing area only. No kiting zone.

FOR YOUR SAFETY ABSOLUTELY NO SPECTATORS IN THIS AREA



No Parking Zone - emergency vehicle turn-around.



Overflow parking for appropriate vehicles (4X4 recommended). Enter/Exit at the grey arrow ONLY.



Please scan the QR code with your camera to join the Utah Hang Gliding and Paragliding Assoc. and to sign the waivers prior to flying.